



ENGLISH VERSION

FREELOCK FIT SYSTEM
2021 / 2022 PRODUCT CATALOG

ALFAcare

CONTENTS

- 03** **FREELOCK FIT SYSTEM**
- 05** **FREELOCK 7S**
- 13** **HIGH POWER**
- 17** **MID POWER**
- 25** **LOW POWER**
- 29** **GUIDE**
- 35** **WIRE & LACE**



FREELOCK FIT SYSTEM

**Giving you the freedom to become exceptional.
Leave everything else to us.**



FREELOCK





SMOOTH & SOPHISTICATED

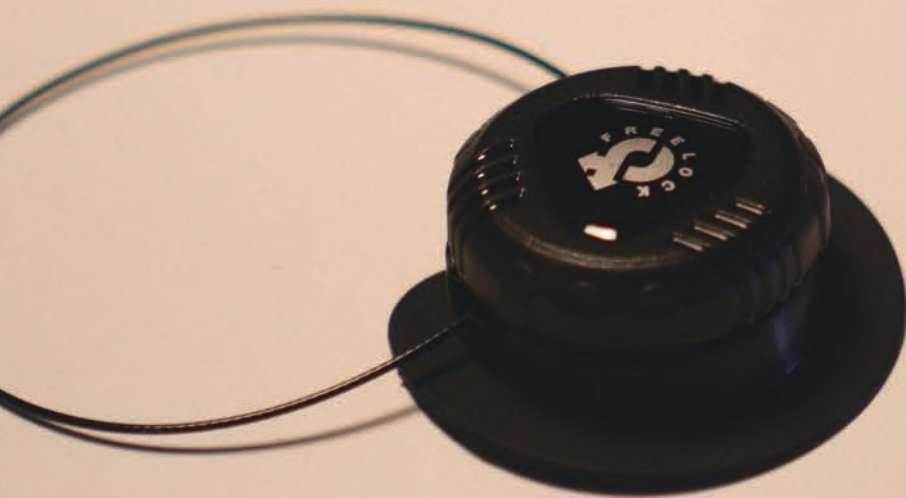
Meticulously engineered for comfortable grip, precise adjustment, and enhanced support to achieve "the perfect fit".

STRONG & STURDY

Reliable durability. Designed to not just last,
but **thrive** in harsh conditions.

SIMPLE & STRAIGHTFORWARD

Quick and easy one-step installation.
Just click in to assemble.
Even easier to tighten, loosen,
and release with just one hand.



SUSTAINABLE

Built to be reusable and renewable
to reduce waste and minimize environmental impact.



SUSTAINABLE INNOVATIONS



From material selection to design and development, we try to make better choices for the environment and our community.



We are committed to creating conscientious products that are environmental-friendly by making them last longer from the beginning.

20%

The Freelock Fit System is built with 20% recycled material. Our technology and innovation allow us to reuse and rebuild with recycled content.

50%

By 2023, we aim to increase this percentage to 50% and take on more responsibility in building a sustainable future.

2023



We are switching our Freelock laces to a combination of dyneema and **40%** recycled polyester.





HIGH POWER

**BIGGER,
STRONGER,
BETTER.**



**A RELIABLE & SAFE COMPANION
FOR ALL YOUR BOLD ADVENTURES.**



NEW

HPO

With a 37mm diameter dial,
HPO is our largest and strongest fit system.
Focusing on power and strength, the HPO system is built
to withstand impact and high tension, and provides
stability and control even in the harshest conditions.



PUSH-PULL TYPE



DIAMETER	37mm
HEIGHT	15mm
DIAL POSITION	TONGUE
CUSTOMIZATION	COLOR, TRANSPARENT, SEMI-TRANSPARENT



MID POWER





PUSH-PULL TYPE

DIAMETER	30mm
HEIGHT	12mm
DIAL POSITION	EYESTAY, TONGUE
CUSTOMIZATION	COLOR, TRANSPARENT, SEMI-TRANSPARENT



MPK

The MPK system is the newest and most upgraded version of our midpower series.

Comprised of a built-in reel and base, the MPK system is simple yet its design is sophisticated and its performance impeccable.

Even with the least number of components, the MPK boasts great strength, security, and durability, and provides a optimal fit system for peak performance.



**Performing more
with fewer parts.**



The ultimate experience, MPK.

DPA

PUSH-PULL TYPE



DIAMETER	30mm
HEIGHT	12mm
DIAL POSITION	EYESTAY, TONGUE
CUSTOMIZATION	COLOR, TRANSPARENT, SEMI-TRANSPARENT



DPB

PUSH-PULL TYPE



DIAMETER	28mm
HEIGHT	12mm
DIAL POSITION	EYESTAY, TONGUE
CUSTOMIZATION	COLOR, TRANSPARENT, SEMI-TRANSPARENT



DPC

PUSH-PULL TYPE



DIAMETER	30mm
HEIGHT	13mm
DIAL POSITION	EYESTAY, TONGUE
CUSTOMIZATION	COLOR, TRANSPARENT, SEMI-TRANSPARENT



DPX

PUSH-PULL TYPE



DIAMETER	28mm
HEIGHT	12mm
DIAL POSITION	EYESTAY, TONGUE
CUSTOMIZATION	COLOR, TRANSPARENT, SEMI-TRANSPARENT



DPZ

PUSH-PULL TYPE



DIAMETER	30mm
HEIGHT	12.5mm
DIAL POSITION	EYESTAY, TONGUE
CUSTOMIZATION	COLOR, TRANSPARENT, SEMI-TRANSPARENT



DRB

ROTATION TYPE

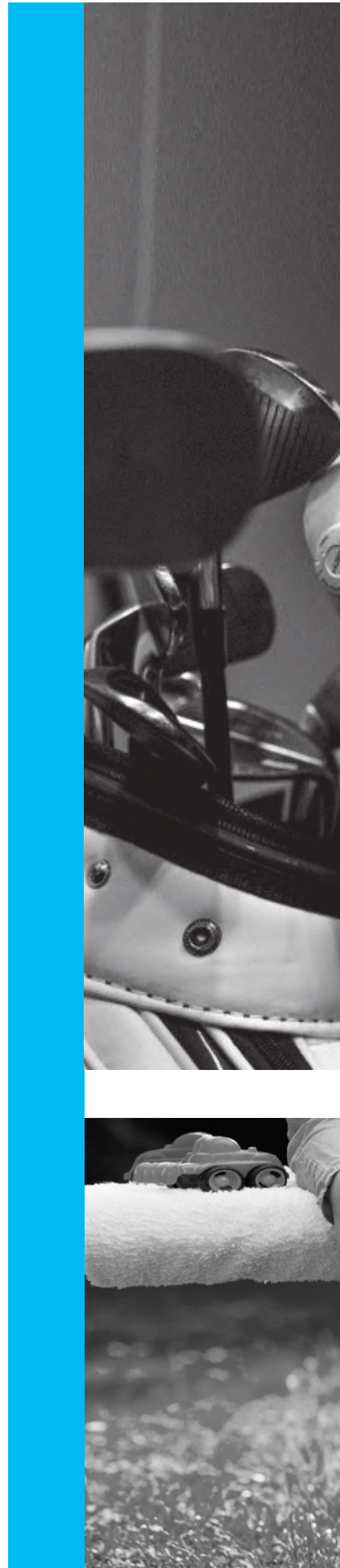


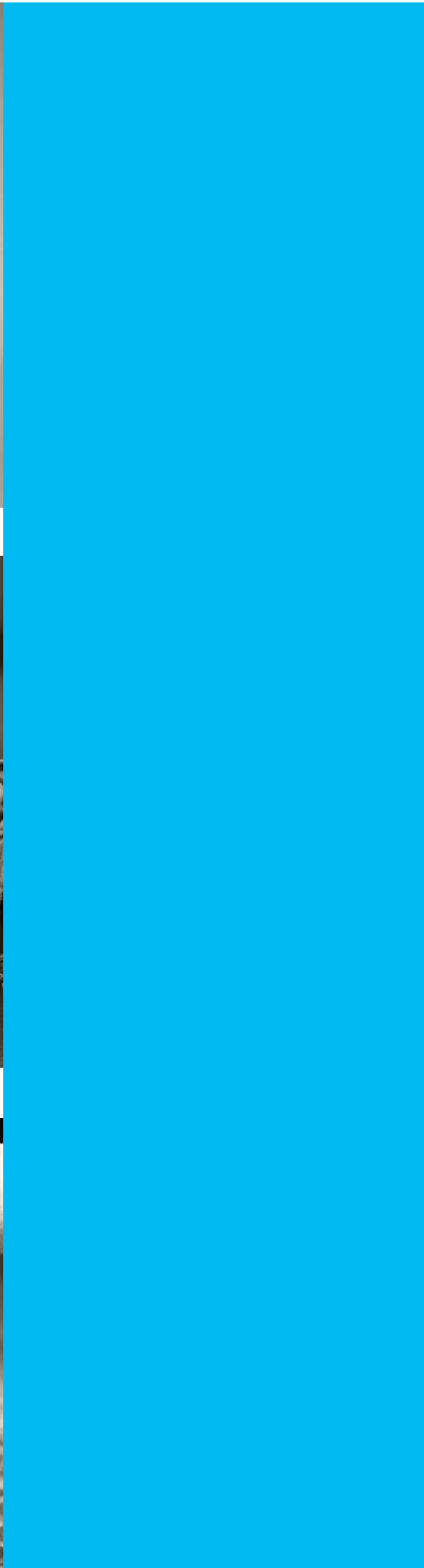
DIAMETER	30mm
HEIGHT	13mm
DIAL POSITION	EYESTAY, TONGUE
CUSTOMIZATION	COLOR, TRANSPARENT, SEMI-TRANSPARENT





LOW POWER





A light & tight solution.



Infinite Possibilities.



LPV

The most compact and lightweight of the series, the LPV system displays great versatility and precise control. The LPV can be used in an array of different fields that benefit from a smaller and lighter application. From golf shoes and casual footwear to kid's shoes and even various garments, the LPV system provides a light and tight solution to areas that require limited size and space.

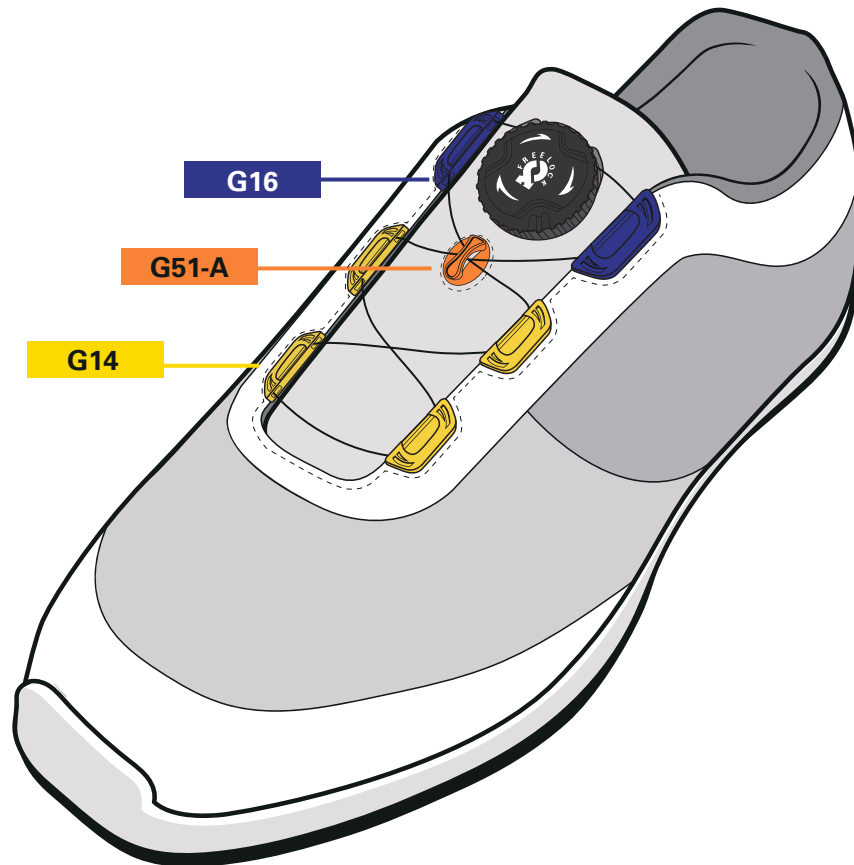


PUSH-PULL TYPE

DIAMETER	25mm
HEIGHT	9.5mm
DIAL POSITION	EYESTAY
CUSTOMIZATION	COLOR, TRANSPARENT, SEMI-TRANSPARENT



GUIDE PATTERN EXAMPLES

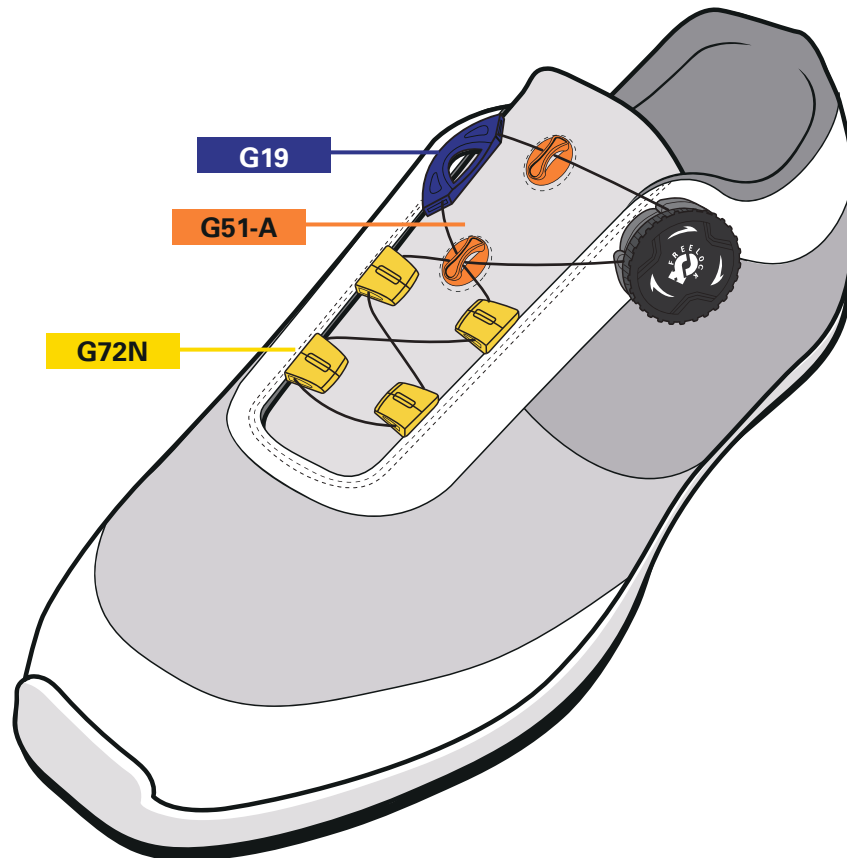


COMPATIBLE WITH _____

25mm~30mm GUIDE / WEBBING
G16, G19, G71-25, G91-25, G81-25, G82-25, G83-25

ALL TONGUE GUIDES
G51A, G52, G53, G54

15mm~20mm GUIDE / WEBBING
G14, G15, G18, G71-15, G71-20, G72N, G72-9, G91-23, G81-20, G82-20, G83-20 G21, G22, G61, G62-8, G62-10



COMPATIBLE WITH

25mm~30mm GUIDE / WEBBING

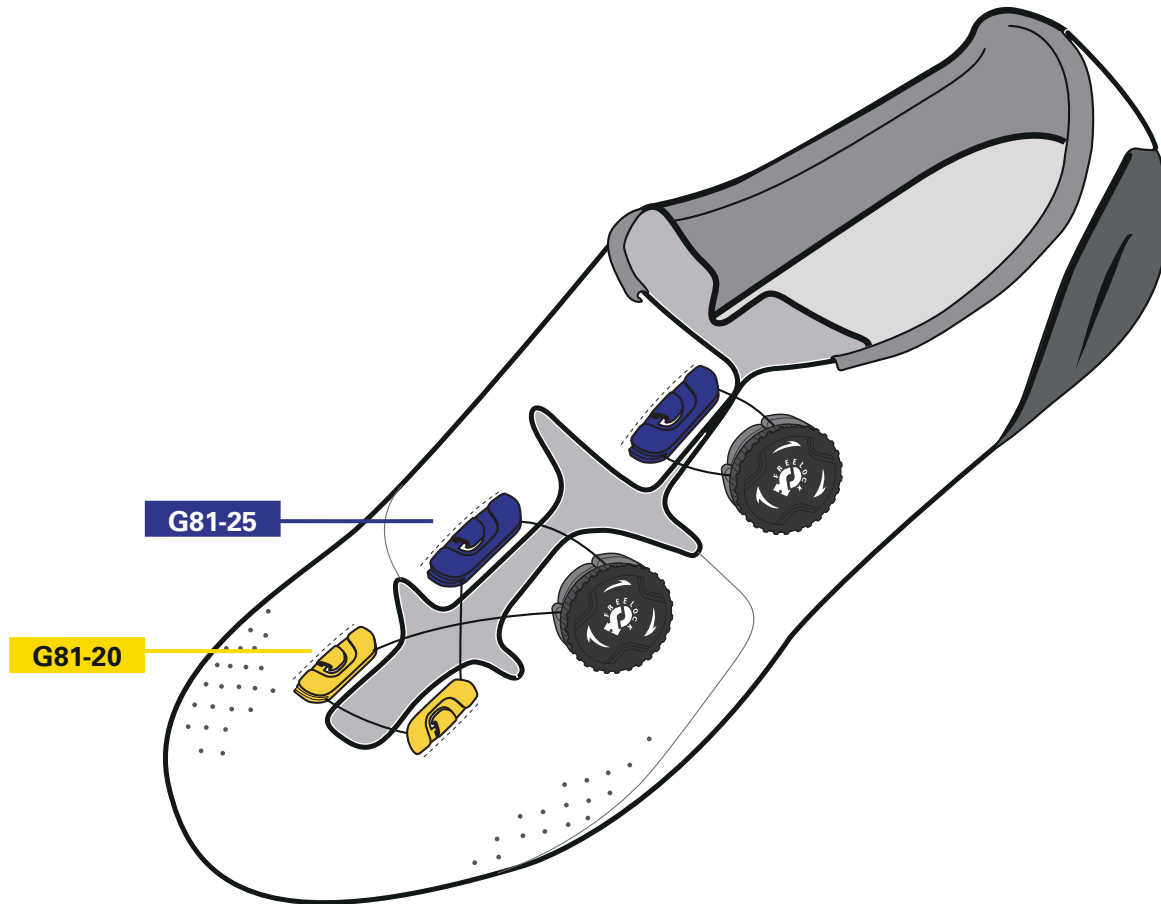
G16, G19, G71-25, G91-25, G81-25, G82-25, G83-25

ALL TONGUE GUIDES

G51A, G52, G53, G54

15mm~20mm GUIDE / WEBBING

G14, G15, G18, G71-15, G71-20, G72N, G72-9, G91-23, G81-20, G82-20, G83-20, G21, G22, G61, G62-8, G62-10



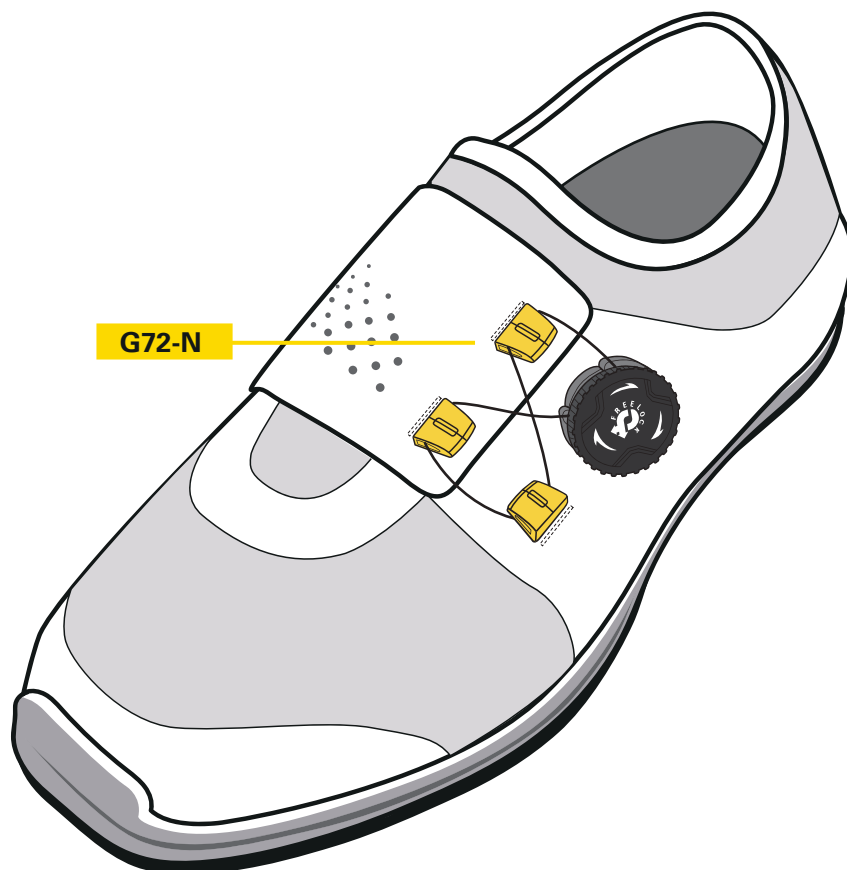
COMPATIBLE WITH _____

25mm~30mm GUIDE / WRAPPING

G16, G19, G71-25, G91-25, G81-25, G82-25, G83-25

15mm~20mm GUIDE / WRAPPING

G14, G15, G18, G71-15, G71-20, G72N, G72-9, G91-23, G81-20, G82-20, G83-20, G21, G22, G61, G62-8, G62-10



COMPATIBLE WITH _____

15mm~20mm GUIDE / WRAPPING

G14, G15, G18, G71-15, G71-20, G72N, G72-9, G91-23, G81-20, G82-20, G83-20, G21, G22, G61, G62-8, G62-10

GUIDE LIST

EYESTAY



G14
10mm x 20mm



G15
10mm x 25mm



G16
10mm x 30mm



G18
10.5mm x 20mm



G19
10.5mm x 25mm



G25
11mm x 54.5mm



G43
15.5mm x 28mm



G71-15
5.5mm x 15mm



G71-20
8.5mm x 20mm



G71-25
8mm x 25mm



G73-25
8mm x 24mm



G74-15
9mm x 23mm



G91-23
11mm x 26mm



G91-25
11mm x 28mm



G72-9
6.5mm x 10mm



G72
10.5mm x 12mm

WEBBING



G21
10mm x 14.5mm



G22
11mm x 12.5mm



GW20-17
13.5mm x 20.5mm



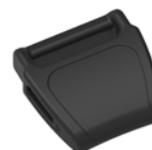
GW20-20
13.5mm x 23mm



G61
8mm x 15mm



G62-8
13mm x 13mm



G62-10
15mm x 15mm

TUBE



G41
6mm x 11mm

HOOKING



G81-20
8.5mm x 20mm



G81-25
9mm x 25mm



G82-20
8mm x 20mm



G82-25
8mm x 25mm



G83-20
8mm x 20mm



G83-25
8mm x 25mm

TONGUE



G51A
9mm x 12mm



G52
8.5mm x 12.5mm



G53
12.5mm x 16mm



G54
16mm x 30mm

WIRE & LACE

WIRE

7X7 STRANDS OF STAINLESS STEEL WRAPPED IN NYLON

- resistant to corrosion
- suitable for applications susceptible to contamination



W83



W100

0.83mm	SIZE	1.00mm
MP, LP	COMPATIBILITY	HP
BLACK, WHITE, SILVER	COLOR	BLACK

LACE

A COMBINATION OF DYNEEMA AND POLYESTER

- displays great tensile strength
- highly elastic, resilient, and low-friction



L100



L105

1.00mm	SIZE	1.05mm
MP, LP	COMPATIBILITY	HP
BLACK, WHITE, BLACK&WHITE	COLOR	BLACK, BLACK&WHITE





F3A

DPA K

DPA



Freelock is a company with over 22 years of experience in the shoe industry and has invested 17 years in perfecting the right closure system to ensure the best fit for every type of activity.

ALFACare

Heddalsveien 11, bygg 140
3674 Notodden
www.alfacare.no
E-post: post@alfacare.no
Telefon: 35 02 95 95